

## [MS-DSPSTSS]:

# Data-Source Adapter SharePoint Team Services Web Service Protocol

---

### Intellectual Property Rights Notice for Open Specifications Documentation

- **Technical Documentation.** Microsoft publishes Open Specifications documentation ("this documentation") for protocols, file formats, data portability, computer languages, and standards support. Additionally, overview documents cover inter-protocol relationships and interactions.
- **Copyrights.** This documentation is covered by Microsoft copyrights. Regardless of any other terms that are contained in the terms of use for the Microsoft website that hosts this documentation, you can make copies of it in order to develop implementations of the technologies that are described in this documentation and can distribute portions of it in your implementations that use these technologies or in your documentation as necessary to properly document the implementation. You can also distribute in your implementation, with or without modification, any schemas, IDLs, or code samples that are included in the documentation. This permission also applies to any documents that are referenced in the Open Specifications documentation.
- **No Trade Secrets.** Microsoft does not claim any trade secret rights in this documentation.
- **Patents.** Microsoft has patents that might cover your implementations of the technologies described in the Open Specifications documentation. Neither this notice nor Microsoft's delivery of this documentation grants any licenses under those patents or any other Microsoft patents. However, a given Open Specifications document might be covered by the Microsoft [Open Specifications Promise](#) or the [Microsoft Community Promise](#). If you would prefer a written license, or if the technologies described in this documentation are not covered by the Open Specifications Promise or Community Promise, as applicable, patent licenses are available by contacting [iplg@microsoft.com](mailto:iplg@microsoft.com).
- **Trademarks.** The names of companies and products contained in this documentation might be covered by trademarks or similar intellectual property rights. This notice does not grant any licenses under those rights. For a list of Microsoft trademarks, visit [www.microsoft.com/trademarks](http://www.microsoft.com/trademarks).
- **Fictitious Names.** The example companies, organizations, products, domain names, email addresses, logos, people, places, and events that are depicted in this documentation are fictitious. No association with any real company, organization, product, domain name, email address, logo, person, place, or event is intended or should be inferred.

**Reservation of Rights.** All other rights are reserved, and this notice does not grant any rights other than as specifically described above, whether by implication, estoppel, or otherwise.

**Tools.** The Open Specifications documentation does not require the use of Microsoft programming tools or programming environments in order for you to develop an implementation. If you have access to Microsoft programming tools and environments, you are free to take advantage of them. Certain Open Specifications documents are intended for use in conjunction with publicly available standards specifications and network programming art and, as such, assume that the reader either is familiar with the aforementioned material or has immediate access to it.

## Revision Summary

Date	Revision History	Revision Class	Comments
4/4/2008	0.1	New	Initial Availability
6/27/2008	1.0	Major	Revised and edited the technical content
12/12/2008	1.01	Editorial	Revised and edited the technical content
7/13/2009	1.02	Major	Changes made for template compliance
8/28/2009	1.03	Editorial	Revised and edited the technical content
11/6/2009	1.04	Editorial	Revised and edited the technical content
2/19/2010	2.0	Editorial	Revised and edited the technical content
3/31/2010	2.01	Editorial	Revised and edited the technical content
4/30/2010	2.02	Minor	Updated the technical content
6/7/2010	2.03	Editorial	Revised and edited the technical content
6/29/2010	2.04	Editorial	Changed language and formatting in the technical content.
7/23/2010	2.04	None	No changes to the meaning, language, or formatting of the technical content.
9/27/2010	2.04	None	No changes to the meaning, language, or formatting of the technical content.
11/15/2010	2.04	None	No changes to the meaning, language, or formatting of the technical content.
12/17/2010	2.04	None	No changes to the meaning, language, or formatting of the technical content.
3/18/2011	2.04	None	No changes to the meaning, language, or formatting of the technical content.
6/10/2011	2.04	None	No changes to the meaning, language, or formatting of the technical content.
1/20/2012	3.0	Major	Significantly changed the technical content.
4/11/2012	3.0	None	No changes to the meaning, language, or formatting of the technical content.
7/16/2012	3.0	None	No changes to the meaning, language, or formatting of the technical content.
9/12/2012	3.0	None	No changes to the meaning, language, or formatting of the technical content.
10/8/2012	3.1	Minor	Clarified the meaning of the technical content.
2/11/2013	3.1	None	No changes to the meaning, language, or formatting of the technical content.
7/30/2013	3.2	Minor	Clarified the meaning of the technical content.
11/18/2013	3.3	Minor	Clarified the meaning of the technical content.

Date	Revision History	Revision Class	Comments
2/10/2014	3.3	None	No changes to the meaning, language, or formatting of the technical content.
4/30/2014	3.3	None	No changes to the meaning, language, or formatting of the technical content.
7/31/2014	3.3	None	No changes to the meaning, language, or formatting of the technical content.
10/30/2014	3.4	Minor	Clarified the meaning of the technical content.
2/26/2016	4.0	Major	Significantly changed the technical content.
7/15/2016	4.0	None	No changes to the meaning, language, or formatting of the technical content.
9/14/2016	4.0	None	No changes to the meaning, language, or formatting of the technical content.

# Table of Contents

<b>1</b>	<b>Introduction .....</b>	<b>6</b>
1.1	Glossary .....	6
1.2	References .....	7
1.2.1	Normative References .....	7
1.2.2	Informative References .....	7
1.3	Overview .....	8
1.4	Relationship to Other Protocols .....	8
1.5	Prerequisites/Preconditions .....	8
1.6	Applicability Statement .....	8
1.7	Versioning and Capability Negotiation .....	9
1.8	Vendor-Extensible Fields .....	9
1.9	Standards Assignments.....	9
<b>2</b>	<b>Messages.....</b>	<b>10</b>
2.1	Transport .....	10
2.2	Common Message Syntax .....	10
2.2.1	Namespaces .....	10
2.2.2	Messages.....	10
2.2.3	Elements .....	10
2.2.4	Complex Types.....	11
2.2.5	Simple Types .....	11
2.2.6	Attributes .....	11
2.2.7	Groups .....	11
2.2.8	Attribute Groups.....	11
<b>3</b>	<b>Protocol Details.....</b>	<b>12</b>
3.1	Server Details.....	12
3.1.1	Abstract Data Model.....	12
3.1.2	Timers .....	12
3.1.3	Initialization .....	12
3.1.4	Message Processing Events and Sequencing Rules .....	12
3.1.4.1	Query .....	13
3.1.4.1.1	Messages .....	13
3.1.4.1.1.1	queryRequestSoapIn .....	13
3.1.4.1.1.2	queryRequestSoapOut .....	13
3.1.4.1.2	Elements.....	13
3.1.4.1.2.1	queryRequest .....	14
3.1.4.1.2.2	queryResponse .....	14
3.1.4.1.2.3	authentication .....	14
3.1.4.1.2.4	dataRoot.....	15
3.1.4.1.2.5	request.....	15
3.1.4.1.2.6	versions.....	15
3.1.4.1.3	Complex Types .....	16
3.1.4.1.3.1	DSQuery.....	16
3.1.4.1.3.1.1	System Metadata Response .....	18
3.1.4.1.3.1.2	Web Metadata Response .....	23
3.1.4.1.3.1.3	List Data Response .....	25
3.1.4.1.3.2	DspQuery .....	26
3.1.4.1.3.3	Fields .....	27
3.1.4.1.3.4	Field.....	27
3.1.4.1.3.5	AllFields.....	28
3.1.4.1.3.6	ArrayOfOrderField .....	28
3.1.4.1.3.7	OrderField.....	28
3.1.4.1.4	Simple Types .....	28
3.1.4.1.4.1	OrderDirection.....	29

3.1.4.1.4.2	ResultContentType .....	29
3.1.4.1.4.3	ColumnMappingType .....	30
3.1.4.1.4.4	DocumentType .....	30
3.1.4.1.4.5	MethodType .....	31
3.1.4.1.5	Attributes .....	31
3.1.4.1.6	Groups .....	31
3.1.4.1.7	Attribute Groups .....	31
3.1.5	Timer Events .....	31
3.1.6	Other Local Events .....	31
<b>4</b>	<b>Protocol Examples .....</b>	<b>32</b>
4.1	Obtain List Data and Schema .....	32
4.2	Obtain the List Schema .....	33
4.3	Obtain Filtered List Data .....	34
<b>5</b>	<b>Security .....</b>	<b>35</b>
5.1	Security Considerations for Implementers .....	35
5.2	Index of Security Parameters .....	35
<b>6</b>	<b>Appendix A: Full WSDL .....</b>	<b>36</b>
<b>7</b>	<b>Appendix B: Product Behavior .....</b>	<b>40</b>
<b>8</b>	<b>Change Tracking .....</b>	<b>41</b>
<b>9</b>	<b>Index .....</b>	<b>42</b>

# 1 Introduction

The Data-Source Adapter SharePoint Team Services Service Protocol enables a client to obtain structured tabular data from a server. This protocol also provides access to metadata about the server and how the tabular data is organized.

Sections 1.5, 1.8, 1.9, 2, and 3 of this specification are normative. All other sections and examples in this specification are informative.

## 1.1 Glossary

This document uses the following terms:

**authentication:** The act of proving an identity to a server while providing key material that binds the identity to subsequent communications.

**language code identifier (LCID):** A 32-bit number that identifies the user interface human language dialect or variation that is supported by an application or a client computer.

**list:** A container within a SharePoint site that stores list items. A list has a customizable schema that is composed of one or more fields.

**site:** A group of related pages and data within a SharePoint site collection. The structure and content of a site is based on a site definition. Also referred to as SharePoint site and web site.

**site collection:** A set of websites (1) that are in the same content database, have the same owner, and share administration settings. A site collection can be identified by a GUID or the **URL** of the top-level site for the site collection. Each site collection contains a top-level site, can contain one or more subsites, and can have a shared navigational structure.

**SOAP action:** The HTTP request header field used to indicate the intent of the SOAP request, using a URI value. See [\[SOAP1.1\]](#) section 6.1.1 for more information.

**SOAP body:** A container for the payload data being delivered by a SOAP message to its recipient. See [\[SOAP1.2-1/2007\]](#) section 5.3 for more information.

**SOAP fault:** A container for error and status information within a SOAP message. See [\[SOAP1.2-1/2007\]](#) section 5.4 for more information.

**Uniform Resource Locator (URL):** A string of characters in a standardized format that identifies a document or resource on the World Wide Web. The format is as specified in [\[RFC1738\]](#).

**web service:** A unit of application logic that provides data and services to other applications and can be called by using standard Internet transport protocols such as HTTP, Simple Mail Transfer Protocol (SMTP), or File Transfer Protocol (FTP). Web services can perform functions that range from simple requests to complicated business processes.

**XML namespace:** A collection of names that is used to identify elements, types, and attributes in XML documents identified in a URI reference [\[RFC3986\]](#). A combination of XML namespace and local name allows XML documents to use elements, types, and attributes that have the same names but come from different sources. For more information, see [\[XMLNS-2ED\]](#).

**XML namespace prefix:** An abbreviated form of an **XML namespace**, as described in [\[XML\]](#).

**XML schema:** A description of a type of XML document that is typically expressed in terms of constraints on the structure and content of documents of that type, in addition to the basic syntax constraints that are imposed by XML itself. An XML schema provides a view of a document type at a relatively high level of abstraction.

**MAY, SHOULD, MUST, SHOULD NOT, MUST NOT:** These terms (in all caps) are used as defined in [\[RFC2119\]](#). All statements of optional behavior use either MAY, SHOULD, or SHOULD NOT.

## 1.2 References

Links to a document in the Microsoft Open Specifications library point to the correct section in the most recently published version of the referenced document. However, because individual documents in the library are not updated at the same time, the section numbers in the documents may not match. You can confirm the correct section numbering by checking the [Errata](#).

### 1.2.1 Normative References

We conduct frequent surveys of the normative references to assure their continued availability. If you have any issue with finding a normative reference, please contact [dochelp@microsoft.com](mailto:dochelp@microsoft.com). We will assist you in finding the relevant information.

[MS-WSSCAML] Microsoft Corporation, "[Collaborative Application Markup Language \(CAML\) Structure](#)".

[RFC2119] Bradner, S., "Key words for use in RFCs to Indicate Requirement Levels", BCP 14, RFC 2119, March 1997, <http://www.rfc-editor.org/rfc/rfc2119.txt>

[RFC2616] Fielding, R., Gettys, J., Mogul, J., et al., "Hypertext Transfer Protocol -- HTTP/1.1", RFC 2616, June 1999, <http://www.rfc-editor.org/rfc/rfc2616.txt>

[RFC4648] Josefsson, S., "The Base16, Base32, and Base64 Data Encodings", RFC 4648, October 2006, <http://www.rfc-editor.org/rfc/rfc4648.txt>

[SOAP1.1] Box, D., Ehnebuske, D., Kakivaya, G., et al., "Simple Object Access Protocol (SOAP) 1.1", May 2000, <http://www.w3.org/TR/2000/NOTE-SOAP-20000508/>

[SOAP1.2/1] Gudgin, M., Hadley, M., Mendelsohn, N., Moreau, J., and Nielsen, H.F., "SOAP Version 1.2 Part 1: Messaging Framework", W3C Recommendation, June 2003, <http://www.w3.org/TR/2003/REC-soap12-part1-20030624>

[SOAP1.2/2] Gudgin, M., Hadley, M., Mendelsohn, N., Moreau, J., and Nielsen, H.F., "SOAP Version 1.2 Part 2: Adjuncts", W3C Recommendation, June 2003, <http://www.w3.org/TR/2003/REC-soap12-part2-20030624>

[WSDL] Christensen, E., Curbera, F., Meredith, G., and Weerawarana, S., "Web Services Description Language (WSDL) 1.1", W3C Note, March 2001, <http://www.w3.org/TR/2001/NOTE-wsdl-20010315>

[XMLNS] Bray, T., Hollander, D., Layman, A., et al., Eds., "Namespaces in XML 1.0 (Third Edition)", W3C Recommendation, December 2009, <http://www.w3.org/TR/2009/REC-xml-names-20091208/>

[XMLSCHEMA1] Thompson, H., Beech, D., Maloney, M., and Mendelsohn, N., Eds., "XML Schema Part 1: Structures", W3C Recommendation, May 2001, <http://www.w3.org/TR/2001/REC-xmlschema-1-20010502/>

[XMLSCHEMA2] Biron, P.V., Ed. and Malhotra, A., Ed., "XML Schema Part 2: Datatypes", W3C Recommendation, May 2001, <http://www.w3.org/TR/2001/REC-xmlschema-2-20010502/>

### 1.2.2 Informative References

[MS-WPPS] Microsoft Corporation, "[Web Part Pages Web Service Protocol](#)".

### 1.3 Overview

This protocol provides access to **list** data via a **web service**. The web service accepts a query that describes the location of the data to be retrieved and any filtering or sorting used to format the requested data.

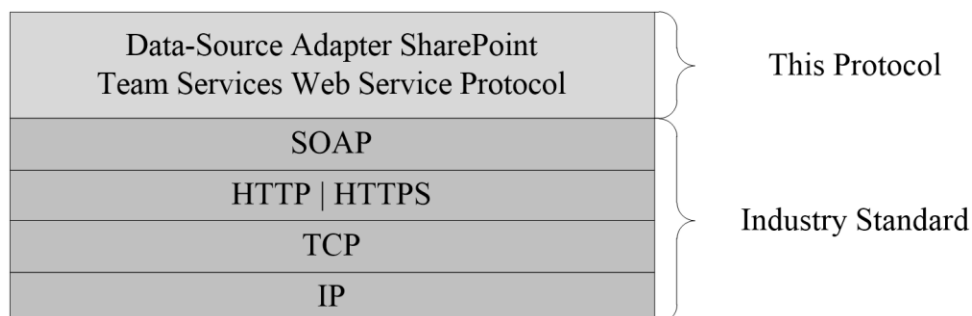
This protocol provides the following specific functionality:

- The ability to retrieve data about the server, such as its supported query type and version.
- The ability to retrieve data about the lists and Web sites accessible via the server.
- The ability to retrieve list data.

### 1.4 Relationship to Other Protocols

This protocol uses the SOAP message protocol for formatting request and response messages, as described in [\[SOAP1.1\]](#), [\[SOAP1.2/1\]](#) and [\[SOAP1.2/2\]](#). It transmits those messages by using HTTP, as described in [\[RFC2616\]](#), or Hypertext Transfer Protocol over Secure Sockets Layer (HTTPS), as described in [\[RFC2818\]](#).

This protocol uses SOAP over HTTP(S) as shown in the following layering diagram:



**Figure 1: This protocol in relation to other protocols**

### 1.5 Prerequisites/Preconditions

This protocol operates against a **site** that is identified by a **URL** that is known by protocol clients. The protocol server endpoint is formed by appending `"/_vti_bin/DspSts.asmx"` to the URL of the site; for example, `http://www.contoso.com/Repository/_vti_bin/DspSts.asmx`.

This protocol assumes that **authentication** has been performed by the underlying protocols.

### 1.6 Applicability Statement

This protocol is intended for use by clients to access list data and Web metadata via a web service. Another protocol, [\[MS-WPPS\]](#), also describes methods for obtaining data from data sources and includes the following preferred methods:

- **GetDataFromDataSource** is the preferred choice for obtaining list data and schema information for list structures. **GetDataFromDataSource** uses a different query semantic in comparison to this protocol.
- **GetXmlDataFromDataSource** is the preferred choice for obtaining Web metadata, and can accept the same **DSQuery** as input to access List data, in addition to other possible types of data sources.



## **1.7 Versioning and Capability Negotiation**

This protocol uses multiple transports with SOAP as described in section [2.1](#).

## **1.8 Vendor-Extensible Fields**

None.

## **1.9 Standards Assignments**

None.

## 2 Messages

In the following sections, the schema definition might differ from the processing rules imposed by the protocol. The WSDL in this specification matches the WSDL that shipped with the product and provides a base description of the schema. The text that introduces the WSDL might specify differences that reflect actual Microsoft product behavior. For example, the schema definition might allow for an element to be **empty**, **null**, or **not present** but the behavior of the protocol as specified restricts the same elements to being **non-empty**, **not null**, and **present**.

### 2.1 Transport

Protocol servers **MUST** support SOAP over HTTP. Protocol servers **SHOULD** additionally support SOAP over HTTPS for securing communication with clients.

Protocol messages **MUST** be formatted as specified either in [\[SOAP1.1\]](#) section 4, or in [\[SOAP1.2/1\]](#) section 5. Protocol server faults **MUST** be returned either using HTTP Status Codes, as specified in [\[RFC2616\]](#) section 10, or using **SOAP faults**, as specified either in [\[SOAP1.1\]](#) section 4.4, or in [\[SOAP1.2/1\]](#) section 5.4.

### 2.2 Common Message Syntax

This section contains common definitions that are used by this protocol. The syntax of the definitions uses **XML schema**, as specified in [\[XMLSCHEMA1\]](#) and [\[XMLSCHEMA2\]](#), and WSDL, as specified in [\[WSDL\]](#).

#### 2.2.1 Namespaces

This protocol specifies and references **XML namespaces** using the mechanisms specified in [\[XMLNS\]](#). Although this document associates an **XML namespace prefix** for each XML namespace that is used, the choice of any particular XML namespace prefix is implementation-specific and not significant for interoperability.

Prefix	Namespace URI	Reference
soap	<a href="http://schemas.xmlsoap.org/wsdl/soap/">http://schemas.xmlsoap.org/wsdl/soap/</a>	<a href="#">[SOAP1.1]</a>
tns	<a href="http://schemas.microsoft.com/sharepoint/dsp">http://schemas.microsoft.com/sharepoint/dsp</a>	
s	<a href="http://www.w3.org/2001/XMLSchema">http://www.w3.org/2001/XMLSchema</a>	<a href="#">[XMLSCHEMA1]</a> , <a href="#">[XMLSCHEMA2]</a>
soap12	<a href="http://schemas.xmlsoap.org/wsdl/soap12/">http://schemas.xmlsoap.org/wsdl/soap12/</a>	<a href="#">[SOAP1.2/1]</a> , <a href="#">[SOAP1.2/2]</a>
(none)	<a href="http://schemas.microsoft.com/sharepoint/dsp">http://schemas.microsoft.com/sharepoint/dsp</a>	
wsdl	<a href="http://schemas.xmlsoap.org/wsdl/">http://schemas.xmlsoap.org/wsdl/</a>	<a href="#">[WSDL]</a>

#### 2.2.2 Messages

This specification does not define any common WSDL message definitions.

#### 2.2.3 Elements

This specification does not define any common XML schema element definitions.

#### **2.2.4 Complex Types**

This specification does not define any common XML schema complex type definitions.

#### **2.2.5 Simple Types**

This specification does not define any common XML schema simple type definitions.

#### **2.2.6 Attributes**

This specification does not define any common XML schema attribute definitions.

#### **2.2.7 Groups**

This specification does not define any common XML schema group definitions.

#### **2.2.8 Attribute Groups**

This specification does not define any common XML schema attribute group definitions.

## 3 Protocol Details

In the following sections, the schema definition might differ from the processing rules imposed by the protocol. The WSDL in this specification matches the WSDL that shipped with the product and provides a base description of the schema. The text that introduces the WSDL might specify differences that reflect actual Microsoft product behavior. For example, the schema definition might allow for an element to be **empty**, **null**, or **not present** but the behavior of the protocol as specified restricts the same elements to being **non-empty**, **not null**, and **present**.

The client side of this protocol is simply a pass-through. That is, no additional timers or other state is required on the client side of this protocol. Calls made by the higher-layer protocol or application are passed directly to the transport, and the results returned by the transport are passed directly back to the higher-layer protocol or application.

Except where specified, protocol clients SHOULD interpret HTTP status codes returned by the protocol server as specified in [\[RFC2616\]](#).

This protocol allows protocol servers to notify protocol clients of application-level faults using SOAP faults. This protocol allows protocol servers to provide additional details for SOAP faults by including either a **detail** element, as specified in [\[SOAP1.1\]](#) section 4.4, or a **Detail** element, as specified in [\[SOAP1.2/1\]](#) section 5.4.5. Except where specified, these SOAP faults are not significant for interoperability, and protocol clients can interpret them in an implementation-specific manner.

This protocol allows protocol servers to perform implementation-specific authorization checks and notify protocol clients of authorization faults either using HTTP status codes or using SOAP faults, as specified previously in this section.

### 3.1 Server Details

#### 3.1.1 Abstract Data Model

This section describes a conceptual model of possible data organization that an implementation maintains to participate in this protocol. The described organization is provided to facilitate the explanation of how the protocol behaves. This document does not mandate that implementations adhere to this model as long as their external behavior is consistent with that described in this document.

#### 3.1.2 Timers

None.

#### 3.1.3 Initialization

None.

#### 3.1.4 Message Processing Events and Sequencing Rules

This protocol has a single operation: **Query**. The **Query** method provides access to list data as well as server and Web metadata.

The following table summarizes the list of WSDL operations as defined by this specification:

Operation	Description
Query	Accepts a request that consists of two parts.

### 3.1.4.1 Query

The **Query** method accepts a request that consists of two parts: an expression to specify the source of the data, and a description of how to manipulate the data before it is returned. It is defined as follows.

```
<wsdl:operation name="Query">
  <wsdl:input name="queryRequest" message="tns:queryRequestSoapIn"/>
  <wsdl:output name="queryRequest" message="tns:queryRequestSoapOut"/>
</wsdl:operation>
```

When the client sends a **queryRequestSoapIn** request message, the server MUST [<1>](#) respond with a **queryRequestSoapOut** response message that consists of either an XML data payload or a schema, or both.

#### 3.1.4.1.1 Messages

The following table summarizes the set of WSDL message definitions that are specific to this operation.

Message	Description
<b>queryRequestSoapIn</b>	A request to initiate a <b>Query</b> operation on the protocol server.
<b>queryRequestSoapOut</b>	A response from the protocol server at the completion of the <b>Query</b> operation.

##### 3.1.4.1.1.1 queryRequestSoapIn

The **SOAP action** value of the message is defined as follows:

<http://schemas.microsoft.com/sharepoint/dsp/queryRequest>

The **SOAP body** contains a **queryRequest** element.

##### 3.1.4.1.1.2 queryRequestSoapOut

The SOAP body contains a **queryResponse** element.

#### 3.1.4.1.2 Elements

The following table summarizes the XML schema element definitions that are specific to this operation.

Element	Description
<b>queryRequest</b>	The body of the <b>queryRequestSoapIn</b> message.

Element	Description
<b>queryResponse</b>	The body of the <b>queryRequestSoapOut</b> message
<b>authentication</b>	Specifies which authentication headers are expected in the request message.
<b>dataRoot</b>	Specifies the site that the protocol uses for processing queries.
<b>Request</b>	Describes the type of data that is being requested and the type of method that is being called.
<b>versions</b>	Describes the version of the protocol that is being used for the query.

#### 3.1.4.1.2.1 queryRequest

Element named "queryRequest" that contains a **dsQuery** element. It is defined as follows.

```
<s:element name="queryRequest" nillable="true">
  <s:complexType>
    <s:sequence>
      <s:element name="dsQuery" type="tns:DSQuery" minOccurs="0"/>
    </s:sequence>
  </s:complexType>
</s:element>
```

**dsQuery:** Element as specified in [3.1.4.1.3.1](#).

#### 3.1.4.1.2.2 queryResponse

This element contains an XML document that contains the result data in response to a query. It is defined as follows.

```
<s:element name="queryResponse">
  <s:complexType mixed="true">
    <s:sequence>
      <s:any/>
    </s:sequence>
  </s:complexType>
</s:element>
```

#### 3.1.4.1.2.3 authentication

Specifies what authentication headers are expected in the request message. This element MUST NOT exist in the query. If the element exists in the query, the response MUST be an exception. It is defined as follows.

```
<s:element name="authentication">
  <s:complexType>
    <s:sequence>
      <s:any minOccurs="0" maxOccurs="unbounded"/>
    </s:sequence>
    <s:anyAttribute/>
  </s:complexType>
```

```
</s:element>
```

#### 3.1.4.1.2.4 dataRoot

**dataRoot** specifies the site that the protocol uses for processing queries. It is defined as follows.

```
<s:element name="dataRoot">
  <s:complexType>
    <s:sequence>
      <s:element minOccurs="0" name="root" type="s:string"/>
    </s:sequence>
    <s:attribute default="true" name="allowRemoteDataAccess" type="s:boolean"/>
    <s:anyAttribute/>
  </s:complexType>
</s:element>
```

**allowRemoteDataAccess:** MUST be ignored by the server, as well as any sub-elements of the element.

**root:** If the value is null or empty, the site URL MUST be the URL by which the service is invoked. For example, if the service is invoked through the site path "http://server/site/<service>", the URL to the site must be "http://server/site". If set, the value must be the complete path to a site to which the query is posted. For example, if the site is "http://server/site", and the client needs to post a query to this site, the value of the **dataRoot** element must be "http://server/site".

#### 3.1.4.1.2.5 request

**request** describes the type of data being requested and the type of method being called. It MUST be present; otherwise, a SOAP fault is returned by the server. It is defined as follows.

```
<s:element name="request">
  <s:complexType>
    <s:attribute name="document" type="tns:DocumentType" use="required"/>
    <s:attribute name="method" type="tns:MethodType" use="required"/>
    <s:anyAttribute/>
  </s:complexType>
</s:element>
```

**document:** Attribute as described in section [3.1.4.1.4.4](#).

**method:** Attribute as described in section [3.1.4.1.4.5](#).

#### 3.1.4.1.2.6 versions

The **versions** element describes the version of the protocol that is being used for the query. It MUST be present; otherwise, a SOAP fault is returned by the server. It is defined as follows.

```
<s:element name="versions">
  <s:complexType>
    <s:sequence>
      <s:element name="version" type="s:string" minOccurs="0"
        maxOccurs="unbounded"/>
    </s:sequence>
    <s:anyAttribute/>
  </s:complexType>
```

</s:element>

**version:** Is a child of the **versions** element. Its value MUST be set to 1.0 if it is present.

### 3.1.4.1.3 Complex Types

The following table summarizes the XML schema complex type definitions that are specific to this operation.

Complex type	Description
<b>DSQuery</b>	The core structure of a request.
<b>DspQuery</b>	Describes how the data is manipulated.
<b>Fields</b>	Contains either a list of <b>Field</b> elements or the <b>AllFields</b> element.
<b>Field</b>	Specifies the name of the list column to be returned.
<b>AllFields</b>	All the fields in the list.
<b>ArrayOfOrderField</b>	Contains a list of <b>OrderField</b> elements.
<b>OrderField</b>	Specifies the field to be sorted in the request.

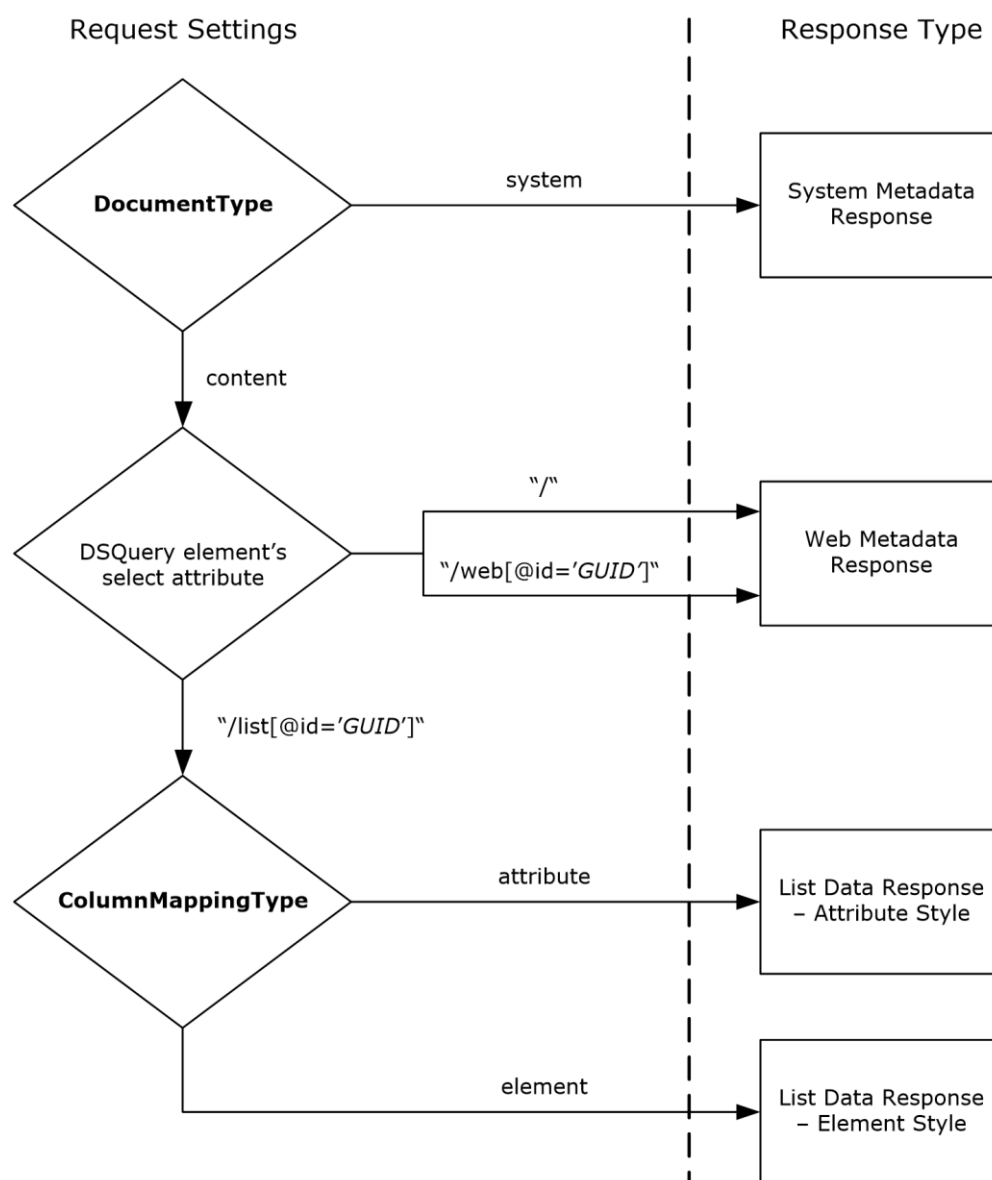
#### 3.1.4.1.3.1 DSQuery

**DSQuery** is the core structure of a request for data using this protocol. **DSQuery** contains all the necessary information to fully describe the source of the data, what to include in the response, any sorting or filtering information about the data, and the formatting for the response. It is defined as follows.

```
<s:complexType name="DSQuery">
  <s:sequence>
    <s:element name="Query" type="tns:DspQuery" minOccurs="0"/>
  </s:sequence>
  <s:attribute name="select" type="s:string"/>
  <s:attribute name="resultContent" type="tns:ResultContentType"
    default="both"/>
  <s:attribute name="columnMapping" type="tns:ColumnMappingType"
    default="element"/>
  <s:attribute name="resultNamespace" type="s:string"/>
  <s:attribute name="resultPrefix" type="s:string"/>
  <s:attribute name="resultRoot" type="s:string"/>
  <s:attribute name="resultRow" type="s:string"/>
  <s:attribute name="startPosition" type="s:string"/>
  <s:attribute name="comparisonLocale" type="s:string"/>
</s:complexType>
```

The following figure shows how the various settings of **DocumentType**, **ColumnMappingType**, and the **select** attribute of **DSQuery** determine the type of response that is generated by this protocol.





**Figure 2: How various request settings determine the response type**

The following table shows how the various combinations of the **DocumentType** attribute of the request element and **select** attributes of the **DSQuery** determine what type of response is generated. The specific behavior for the elements and attributes of the **DSQuery** change based on the type of response, as detailed in [3.1.4.1.3.1.1](#), [3.1.4.1.3.1.2](#), and [3.1.4.1.3.1.3](#).

Document type	select attribute	Response
System	"/", "/dataRoot", "/authentication", "/versions", "/querySupport"	<b>System Metadata Response.</b> See <a href="#">3.1.4.1.3.1.1</a>

Document type	select attribute	Response
Content	"/","/web[@id='GUID']"	<b>Web Metadata Response.</b> See 3.1.4.1.3.1.2.
Content	"/list[@id='GUID']"	<b>List Data Response.</b> See 3.1.4.1.3.1.3.

**select:** Specifies an expression that selects the data upon which the query is applied. The possible valid expressions depend on the setting specified in **DocumentType**.

**startPosition:** Used to provide paging support. If set, the value MUST be a Base64 encoded **string** as defined in [\[RFC4648\]](#) section 4, where the **string** is of the format "t\_ID=ROWID" and ROWID is the identifier value for the first row in the requested set of rows. When the first page is requested in query, the value of **startPosition** should be empty. The request result contains the value to do next page request, in **pagingInfo** element inside the **resultRoot** element. The value can be used to issue queries for subsequent paging.

**resultNamespace:** Used to set the XML namespace for the XML data payload.

**resultPrefix:** Used to set the prefix for the XML namespace for the XML data payload.

**resultRoot:** Used to specify the name of the root element for the XML data payload.

**resultRow:** Used to specify the name of the row elements for the XML data payload.

**comparisionLocale:** Used to specify the locale used for **string** comparisons. If set, the value MUST be a **language code identifier (LCID)**.

**pagingInfo:** Used to specify the value of **startPosition** for query to the next page.

**resultContent:** Element as specified in [3.1.4.1.4.2](#).

**columnMapping:** Element as specified in [3.1.4.1.4.3](#).

**Query:** Element as specified in [3.1.4.1.3.2](#).

### 3.1.4.1.3.1.1 System Metadata Response

If **DocumentType** is set to "system", the attributes and elements of the **DSQuery** element MUST follow the behavior specified in the following list. If not explicitly noted, the behavior is as specified in section [3.1.4.1.3.1](#).

**startPosition:** This attribute MUST be ignored.

**resultNamespace:** If this attribute specifies an namespace, the data payload in the response MUST use the specified namespace. If not set, an empty **string** MUST be used as the namespace. If set to an invalid namespace **string**, the response MUST be an exception.

**resultPrefix:** If **resultPrefix** and **resultNamespace** are set, the namespace for the data payload MUST be set as the **resultNamespace** with the namespace prefix specified as "resultPrefix". If

**resultNamespace** is not set and **resultPrefix** is set, the response MUST be an exception. If **resultPrefix** is not set, the response MUST use a blank result namespace prefix for the namespace.

**resultRoot:** This attribute MUST be ignored.

**resultRow:** This attribute MUST be ignored.

**comparisionLocale:** This attribute MUST be ignored.

**columnMapping:** This attribute MUST be ignored.

**Query:** This element MUST NOT exist. If set, the response MUST be an exception.

The response MUST be one of the values in the following table, such that when the **select** attribute of the **DSQuery** is set to an expression from the Expression column, the response contains either the schema or the data, or both the schema and the data from the Result column.

Expression	Result
/	<div data-bbox="433 226 526 254">Schema</div> <pre data-bbox="626 247 1433 1304"> &lt;x:schema xmlns:d="http://schemas.microsoft.com/sharepoint/dsp" targetNamespace="http://schemas.microsoft.com/sharepoint/dsp" elementFormDefault="qualified" attributeFormDefault="unqualified" xmlns:x="http://www.w3.org/2001/XMLSchema"&gt;   &lt;x:element name="dspSts"&gt;     &lt;x:complexType&gt;       &lt;x:all&gt;         &lt;x:element name="versions"&gt;           &lt;x:complexType&gt;             &lt;x:sequence&gt;               &lt;x:element name="version" maxOccurs="unbounded" type="x:string" /&gt;             &lt;/x:sequence&gt;           &lt;/x:complexType&gt;         &lt;/x:element&gt;         &lt;x:element name="querySupport"&gt;           &lt;x:complexType&gt;             &lt;x:sequence&gt;               &lt;x:element name="queryType" maxOccurs="unbounded" type="x:string" /&gt;             &lt;/x:sequence&gt;           &lt;/x:complexType&gt;         &lt;/x:element&gt;         &lt;x:element name="dataRoot"&gt;           &lt;x:complexType&gt;             &lt;x:sequence&gt;               &lt;x:element name="rootFormat" minOccurs="0" maxOccurs="unbounded" type="x:string" /&gt;             &lt;/x:sequence&gt;           &lt;/x:complexType&gt;         &lt;/x:element&gt;         &lt;x:element name="authentication"&gt;           &lt;x:complexType&gt;             &lt;x:sequence&gt;               &lt;x:element name="authMethod" minOccurs="0" maxOccurs="unbounded" type="x:string" /&gt;             &lt;/x:sequence&gt;           &lt;/x:complexType&gt;         &lt;/x:element&gt;       &lt;/x:all&gt;     &lt;/x:complexType&gt;   &lt;/x:element&gt; &lt;/x:schema&gt; </pre>
/	<div data-bbox="433 1394 488 1421">Data</div> <pre data-bbox="626 1415 1317 1724"> &lt;d:dspSts xmlns:d="http://schemas.microsoft.com/sharepoint/dsp"&gt;   &lt;d:versions&gt;     &lt;d:version&gt;1.0&lt;/d:version&gt;   &lt;/d:versions&gt;   &lt;d:querySupport&gt;     &lt;d:queryType&gt;DSPQ&lt;/d:queryType&gt;   &lt;/d:querySupport&gt;   &lt;d:dataRoot&gt;     &lt;d:rootFormat&gt;URL&lt;/d:rootFormat&gt;   &lt;/d:dataRoot&gt;   &lt;d:authentication /&gt; &lt;/d:dspSts&gt; </pre>

Expression	Result	
/dataRoot	Schema	<pre> &lt;x:schema xmlns:d="http://schemas.microsoft.com/sharepoint/dsp" targetNamespace="http://schemas.microsoft.com/sharepoint/dsp" elementFormDefault="qualified" attributeFormDefault="unqualified" xmlns:x="http://www.w3.org/2001/XMLSchema"&gt;   &lt;x:element name="dspSts"&gt;     &lt;x:complexType&gt;       &lt;x:all&gt;         &lt;x:element name="dataRoot"&gt;           &lt;x:complexType&gt;             &lt;x:sequence&gt;               &lt;x:element name="rootFormat" minOccurs="0" maxOccurs="unbounded" type="x:string" /&gt;             &lt;/x:sequence&gt;           &lt;/x:complexType&gt;         &lt;/x:element&gt;       &lt;/x:all&gt;     &lt;/x:complexType&gt;   &lt;/x:element&gt; &lt;/x:schema&gt; </pre>
/dataRoot	Data	<pre> &lt;d:dspSts xmlns:d="http://schemas.microsoft.com/sharepoint/dsp"&gt;   &lt;d:dataRoot&gt;     &lt;d:rootFormat&gt;URL&lt;/d:rootFormat&gt;   &lt;/d:dataRoot&gt; &lt;/d:dspSts&gt; </pre>
/querySupport	Schema	<pre> &lt;x:schema xmlns:d="http://schemas.microsoft.com/sharepoint/dsp" targetNamespace="http://schemas.microsoft.com/sharepoint/dsp" elementFormDefault="qualified" attributeFormDefault="unqualified" xmlns:x="http://www.w3.org/2001/XMLSchema"&gt;   &lt;x:element name="dspSts"&gt;     &lt;x:complexType&gt;       &lt;x:all&gt;         &lt;x:element name="querySupport"&gt;           &lt;x:complexType&gt;             &lt;x:sequence&gt;               &lt;x:element name="queryType" maxOccurs="unbounded" type="x:string" /&gt;             &lt;/x:sequence&gt;           &lt;/x:complexType&gt;         &lt;/x:element&gt;       &lt;/x:all&gt;     &lt;/x:complexType&gt;   &lt;/x:element&gt; &lt;/x:schema&gt; </pre>

Expression	Result	
/querySupport	Data	<pre> &lt;d:dspSts xmlns:d="http://schemas.microsoft.com/sharepoint/dsp"&gt;   &lt;d:querySupport&gt;     &lt;d:queryType&gt;DSPQ&lt;/d:queryType&gt;   &lt;/d:querySupport&gt; &lt;/d:dspSts&gt; </pre>
/versions	Schema	<pre> &lt;x:schema xmlns:d="http://schemas.microsoft.com/sharepoint/dsp" targetNamespace="http://schemas.microsoft.com/sharepoint/dsp" elementFormDefault="qualified" attributeFormDefault="unqualified" xmlns:x="http://www.w3.org/2001/XMLSchema"&gt;   &lt;x:element name="dspSts"&gt;     &lt;x:complexType&gt;       &lt;x:all&gt;         &lt;x:element name="versions"&gt;           &lt;x:complexType&gt;             &lt;x:sequence&gt;               &lt;x:element name="version" maxOccurs="unbounded" type="x:string" /&gt;             &lt;/x:sequence&gt;           &lt;/x:complexType&gt;         &lt;/x:element&gt;       &lt;/x:all&gt;     &lt;/x:complexType&gt;   &lt;/x:element&gt; &lt;/x:schema&gt; </pre>
/versions	Data	<pre> &lt;d:dspSts xmlns:d="http://schemas.microsoft.com/sharepoint/dsp"&gt;   &lt;d:versions&gt;     &lt;d:version&gt;1.0&lt;/d:version&gt;   &lt;/d:versions&gt; &lt;/d:dspSts&gt; </pre>

Expression	Result	
/authentication	Schema	<pre> &lt;x:schema xmlns:d="http://schemas.microsoft.com/sharepoint/dsp" targetNamespace="http://schemas.microsoft.com/sharepoint/dsp" elementFormDefault="qualified" attributeFormDefault="unqualified" xmlns:x="http://www.w3.org/2001/XMLSchema"&gt;   &lt;x:element name="dspSts"&gt;     &lt;x:complexType&gt;       &lt;x:all&gt;         &lt;x:element name="authentication"&gt;           &lt;x:complexType&gt;             &lt;x:sequence&gt;               &lt;x:element name="authMethod" minOccurs="0" maxOccurs="unbounded" type="x:string" /&gt;             &lt;/x:sequence&gt;           &lt;/x:complexType&gt;         &lt;/x:element&gt;       &lt;/x:all&gt;     &lt;/x:complexType&gt;   &lt;/x:element&gt; &lt;/x:schema&gt; </pre>
/authentication	Data	<pre> &lt;d:dspSts xmlns:d="http://schemas.microsoft.com/sharepoint/dsp"&gt;   &lt;d:authentication /&gt; &lt;/d:dspSts&gt; </pre>

### 3.1.4.1.3.1.2 Web Metadata Response

If the **DocumentType** is set to "content", the attributes and elements of the **DSQuery** element MUST follow the behavior specified in the following list. If not explicitly noted, the behavior is as specified in section [3.1.4.1.3.1](#).

**startPosition:** This attribute MUST be ignored.

**resultNamespace:** If this attribute specifies an namespace, the data payload in the response MUST use the specified namespace. If not set, an empty string MUST be used as the namespace. If set to an invalid namespace string, the response MUST be an exception.

**resultPrefix:** If **resultPrefix** and **resultNamespace** are set, the namespace for the data payload MUST be set as the **resultNamespace** with the namespace prefix specified as "resultPrefix". If **resultNamespace** is not set and **resultPrefix** is set, the response MUST be an exception. If **resultPrefix** is not set, the response MUST use a blank result namespace prefix for the namespace.

**resultRoot:** This attribute MUST be ignored.

**resultRow:** This attribute MUST be ignored.

**comparisonLocale:** This attribute MUST be ignored.

**columnMapping:** This attribute MUST be ignored.

**select:** If the value set for **select** is a slash (/), the response MUST contain metadata conforming to the following schema for the top-level Web site in the **site collection**. If set to `"/web[@id='Path']"`, where *Path* is the relative path of a site, the response MUST contain Web metadata for that site conforming to the following schema:

```
<x:schema xmlns:d="http://schemas.microsoft.com/sharepoint/dsp"
targetNamespace="http://schemas.microsoft.com/sharepoint/dsp" elementFormDefault="qualified"
attributeFormDefault="unqualified" xmlns:x="http://www.w3.org/2001/XMLSchema">
  <x:complexType name="ObjectPropertiesType">
    <x:attribute name="id" type="x:string" use="required" />
    <x:attribute name="displayName" type="x:string" />
    <x:attribute name="contentType" type="x:string" use="required" />
    <x:attribute name="serverParameters" type="x:string" use="required" />
    <x:attribute name="supportFiltering" type="x:boolean" />
    <x:attribute name="supportOrdering" type="x:boolean" />
    <x:attribute name="supportPaging" type="x:string" />
    <x:attribute name="comparisonLocale" type="x:int" />
    <x:attribute name="unsafe" type="x:boolean" />
    <x:attribute name="querySupport" type="x:string" />
  </x:complexType>
  <x:element name="web">
    <x:complexType>
      <x:sequence>
        <x:element name="web" type="d:ObjectPropertiesType" minOccurs="0"
maxOccurs="unbounded" />
        <x:element name="list" type="d:ObjectPropertiesType" minOccurs="0"
maxOccurs="unbounded" />
      </x:sequence>
      <x:attribute name="id" type="x:string" use="required" />
    </x:complexType>
  </x:element>
</x:schema>
```

**web.web:** Specifies a subsite of the requested web object.

**web.list:** Specifies a list of the requested web object.

**id:** A string that identifies the requested web object.

The following table describes properties on the list or web object that is returned.

Name	Description
id	Required. A string that identifies the list or web object.
displayName	Optional. Specifies a string containing the friendly name for the list or web object. This property is used as required.
contentType	Required. Specifies the content type of the object returned, which is set to <b>RowReturning</b> for list objects and to <b>TableReturning</b> for web objects.
serverParameters	Required. <b>None</b> for list and web objects.
supportFiltering	Optional. Specifies whether filtering is supported. True for <b>RowReturning</b> objects. Although false for non- <b>RowReturning</b> objects, the <b>unsafe</b> and <b>serverParameters</b> fields can still be filtered.
supportOrdering	Optional. Specifies whether ordering is supported. This attribute is set to true.



Name	Description
supportPaging	Optional. The adapter supports forward-only paging as defined in data retrieval service protocol. When paging is requested in the query by specifying startPosition="" within the <dsQuery> element, the adapter generates an XML BLOB that can be used to retrieve the next batch of rows. This XML BLOB is returned through the next attribute in the <dsQueryResponse> element returned. The client can then set the startPosition attribute to this BLOB and repeat the original query to retrieve the next set of rows.
unsafe	Optional. Because all web and list objects are safe, this attribute is set to false.
comparisonLocale	Optional. Specifies the default Windows locale identifier for a RowReturning object. This attribute is not defined for non-RowReturning objects.
querySupport	Optional. Only the data retrieval service query (DspQuery) is supported.

### 3.1.4.1.3.1.3 List Data Response

**startPosition:** A **string** that specifies the beginning of the next page if paging is supported in the data payload. The **string** value can be used to retrieve next page data in the subsequent request for data using this protocol.

**resultNamespace:** If this attribute specifies a namespace, the data payload in the response MUST use the specified namespace. If not set, an empty **string** MUST be used as the namespace. If set to an invalid namespace **string**, the response MUST be an exception.

**resultPrefix:** If **resultPrefix** and **resultNamespace** are set, the namespace for the data payload MUST be the **resultNamespace** with the namespace prefix specified as "resultPrefix". If **resultNamespace** is not set and **resultPrefix** is set, the response MUST be an exception. If **resultPrefix** is not set, the response MUST use a blank result namespace prefix for the namespace.

**resultRoot:** If set to a non-empty **string**, the response MUST use the **resultRoot** value as the name of the root element for the data payload. If not set, the response MUST use the name of the list being queried as the name of the root element for the data payload.

**resultRow:** If set to a non-empty **string**, the response MUST use the **resultRow** value as the name of the element for each row of data in the data payload. If not set or if set to an empty **string**, the response MUST use the name of the list being queried with "\_Row" appended as the name of the element for each row of data in the data payload.

**comparisionLocale:** If the locale is not present or not supported, the default locale of the server MUST be used. If set to a supported LCID value, any **string** comparisons MUST use the **comparisonLocale** value.

**Query:** Element as specified in section [3.1.4.1.3.2](#).

**resultContent:** Attribute as specified in section [3.1.4.1.4.2](#).

**columnMapping:** Attribute as specified in section [3.1.4.1.4.3](#).

Based on the **columnMapping** setting, the response SHOULD [<2>](#) contain data that conforms to the following table.

The value of the **columnMapping** attribute in the columnMapping column results in data that conforms to the schema in the Schema column of the following table for the corresponding row. The **resultRoot** and **resultRow** values shown in the table are placeholders for the actual **resultRow** and **resultRoot** values as described in the preceding list. The **sequence** attribute that is a child of the **resultRow** element MUST contain one element or attribute entry for each column of data that is returned in the response.

columnMapping attribute	Schema
element	<pre> &lt;x:schema xmlns:d="http://schemas.microsoft.com/sharepoint/dsp " xmlns:x="http://www.w3.org/2001/XMLSchema"&gt;   &lt;x:element name="resultRoot"&gt;     &lt;x:complexType&gt;       &lt;x:sequence maxOccurs="unbounded"&gt;         &lt;x:element name="resultRow"           minOccurs="0"&gt;           &lt;x:complexType&gt;             &lt;x:sequence&gt;               &lt;x:element /&gt;             &lt;/x:sequence&gt;           &lt;/x:complexType&gt;         &lt;/x:element&gt;       &lt;/x:sequence&gt;     &lt;/x:complexType&gt;   &lt;/x:element&gt; &lt;/x:schema&gt; </pre>
attribute	<pre> &lt;x:schema xmlns:d="http://schemas.microsoft.com/sharepoint/dsp " xmlns:x="http://www.w3.org/2001/XMLSchema"&gt;   &lt;x:element name="resultRoot"&gt;     &lt;x:complexType&gt;       &lt;x:sequence maxOccurs="unbounded"&gt;         &lt;x:element name="resultRow"           minOccurs="0"&gt;           &lt;x:complexType&gt;             &lt;x:sequence&gt;               &lt;x:attribute /&gt;             &lt;/x:sequence&gt;           &lt;/x:complexType&gt;         &lt;/x:element&gt;       &lt;/x:sequence&gt;     &lt;/x:complexType&gt;   &lt;/x:element&gt; &lt;/x:schema&gt; </pre>

### 3.1.4.1.3.2 DspQuery

The **DspQuery** element describes how the data is manipulated before it is formatted for return to the client. The **DspQuery** element describes the columns of data to be included in the results, how to sort or filter the data, and the maximum number of data rows to be returned. It is defined as follows.

```

<s:complexType name="DspQuery">
  <s:sequence>

```

```

<s:element name="Fields" type="tns:Fields" minOccurs="0"/>
<s:element name="Where" minOccurs="0">
  <s:complexType mixed="true">
    <s:sequence>
      <s:any/>
    </s:sequence>
  </s:complexType>
</s:element>
<s:element name="OrderBy" type="tns:ArrayOfOrderField" minOccurs="0"/>
</s:sequence>
<s:attribute name="RowLimit" type="s:long" default="-1"/>
</s:complexType>

```

**Fields:** Contains a list of **Field** elements as specified in [3.1.4.1.3.3](#). If not specified, the result MUST be handled as if only **AllFields** had been set.

**Where:** Contains filter information as specified in [\[MS-WSSCAML\]](#) section 2.2. If not set then the response MUST contain all the rows of data from the data source, limited only by the **RowLimit** value.

**OrderBy:** Element of type **ArrayOfOrderField** as specified in [3.1.4.1.3.6](#). If not set then the response MUST contain the rows of data in the order that they were retrieved from the data source.

**RowLimit:** Sets the paging limit of the request. If **RowLimit** is not specified, all rows of the list MUST be returned. If set, the response MUST contain a number of rows less than or equal to the row limit.

### 3.1.4.1.3.3 Fields

The **Fields** element MUST contain either a list of **Field** elements as specified in [3.1.4.1.3.4](#) or the **AllFields** element as specified in [3.1.4.1.3.5](#). The **Fields** element MUST NOT be empty. If the **Fields** element is empty, the response MUST be an exception. It is defined as follows.

```

<s:complexType name="Fields">
  <s:choice>
    <s:element name="AllFields" type="tns:AllFields" />
    <s:sequence>
      <s:element name="Field" type="tns:Field" maxOccurs="unbounded" />
    </s:sequence>
  </s:choice>
</s:complexType>

```

**Field:** Element as defined in 3.1.4.1.3.4.

**AllFields:** Element as defined in 3.1.4.1.3.5.

### 3.1.4.1.3.4 Field

Specifies the name of the list column to be returned in the SOAP response, as follows.

```

<s:complexType name="Field">
  <s:attribute name="Name" type="s:string"/>
  <s:attribute name="Alias" type="s:string"/>
</s:complexType>

```

**Name:** The name of the list column.

**Alias:** The alternate name of the list column. If not set, the **displayName** for the column in the response will be set to the **name** of the column. If set, the **displayName** for the column in the response MUST be the **alias** specified. **displayName** is the name of the element in the response that represent the field.

#### 3.1.4.1.3.5 AllFields

Returns all the fields in the list, except any hidden or computed fields, as follows.

```
<s:complexType name="AllFields">  <s:attribute name="IncludeHiddenFields" type="s:boolean"
default="false"/></s:complexType>
```

**IncludeHiddenFields:** Determines whether hidden fields and computed fields are included in the result set. If false, the result set MUST NOT include hidden fields or computed fields. If **true**, the result set MUST include all hidden and computed fields.

#### 3.1.4.1.3.6 ArrayOfOrderField

Contains a list of **OrderField** elements as described in [3.1.4.1.3.7](#). The result set MUST be sorted based on the **OrderField** elements specified, with the sorts applied iteratively. It is defined as follows.

```
<s:complexType name="ArrayOfOrderField">
  <s:sequence>
    <s:element name="OrderField" type="tns:OrderField" minOccurs="0"
      maxOccurs="unbounded"/>
  </s:sequence>
</s:complexType>
```

**OrderField:** Element as defined in 3.1.4.1.3.7.

#### 3.1.4.1.3.7 OrderField

Specifies the field to be sorted in the SOAP request. **OrderField** has two attributes: the **name** attribute specifies the internal name of the order by field, and the **direction** attribute specifies if the sort order is ascending (with value "ASC") or descending (with value "DESC"). The default value of **direction** is "ASC". It is defined as follows.

```
<s:complexType name="OrderField">
  <s:attribute name="Name" type="s:string"/>
  <s:attribute name="Direction" type="tns:OrderDirection" default="ASC"/>
</s:complexType>
```

#### 3.1.4.1.4 Simple Types

The following table summarizes the XML schema simple type definitions that are specific to this operation.

Simple type	Description
<b>OrderDirection</b>	Specifies the sort order.
<b>ResultContentType</b>	Specifies which content is returned.

Simple type	Description
<b>ColumnMappingType</b>	Used to determine the format of the data that is returned.
<b>DocumentType</b>	Specifies the data source that is being returned.
<b>MethodType</b>	The type of operation to be performed.

#### 3.1.4.1.4.1 OrderDirection

Specifies whether the sort order of a given list field is ascending (specified with the value of "ASC") or descending (specified with the value of "DESC") as follows.

```
<s:simpleType name="OrderDirection">
  <s:restriction base="s:string">
    <s:enumeration value="ASC"/>
    <s:enumeration value="DESC"/>
  </s:restriction>
</s:simpleType>
```

The following table defines possible values for **OrderDirection**.

Value	Meaning
ASC	Sort order is ascending
DESC	Sort order is descending

#### 3.1.4.1.4.2 ResultContentType

**ResultContentType** specifies what content to include in the response. It is defined as follows.

```
<s:simpleType name="ResultContentType">
  <s:restriction base="s:string">
    <s:enumeration value="both"/>
    <s:enumeration value="schemaOnly"/>
    <s:enumeration value="dataOnly"/>
  </s:restriction>
</s:simpleType>
```

The following table defines possible values for **ResultContentType**.

Value	Meaning
both	Return both schema and list data.

Value	Meaning
schemaOnly	Return only schema info.
dataOnly	Return only list data.

#### 3.1.4.1.4.3 ColumnMappingType

**ColumnMappingType** is used to determine the format of the data returned to the client. If **ColumnMappingType** is set to the value of "element", the data MUST be formatted so that each column of data is returned as a child element to the row element. For example:

```
<Widgets Row>
  <Title>Widget C</Title>
  <Count>23</Count>
  <Stock>1</Stock>
  <ID>3</ID>
</Widgets_Row>
```

When the **ColumnMappingType** is set to the value of "attribute", the data MUST be formatted so that each column of data is returned as an attribute of the row element. For example:

```
<Widgets_Row Title="Widget A" Count="50" Stock="0" ID="1" />
```

When **ColumnMappingType** is set to "attribute" the result data MUST NOT contain any data annotations that are used to comment return data. The "attribute" for **ColumnMappingType** setting is designed to increase performance when a client is requesting only row data from a data source. For example:

```
<s:simpleType name="ColumnMappingType">
  <s:restriction base="s:string">
    <s:enumeration value="element"/>
    <s:enumeration value="attribute"/>
  </s:restriction>
</s:simpleType>
```

The following table defines possible values for **ColumnMappingType**.

Value	Meaning
element	The server MUST send result XML using elements to store column data.
attribute	The server MUST send result XML using attributes on to store column data.

#### 3.1.4.1.4.4 DocumentType

The **DocumentType** is used to specify the source of the data to be returned to the client. **DocumentType** determines how the **select** attribute of the **DSQuery** element is interpreted. It is defined as follows.

```
<s:simpleType name="DocumentType">
  <s:restriction base="s:string">
    <s:enumeration value="content"/>
    <s:enumeration value="system"/>
  </s:restriction>
</s:simpleType>
```

The following table defines possible values for **DocumentType**.

Value	Meaning
content	Return information about a list or Web site.
system	Return information about the DSPSTSS web service.

#### 3.1.4.1.4.5 MethodType

**MethodType** is the type of operation that the server can perform. **MethodType** MUST be set to the value of "query". It is defined as follows.

```
<s:simpleType name="MethodType">
  <s:restriction base="s:string">
    <s:enumeration value="query"/>
  </s:restriction>
</s:simpleType>
```

#### 3.1.4.1.5 Attributes

None.

#### 3.1.4.1.6 Groups

None.

#### 3.1.4.1.7 Attribute Groups

None.

### 3.1.5 Timer Events

None.

### 3.1.6 Other Local Events

None.

## 4 Protocol Examples

The examples that follow use a list called "Widgets" that has a GUID based identifier of {C13E4B16-9982-4C30-B533-2B4068B0C623}. The list contains the fields described in the following table.

Field name	Field type
<b>ID</b>	Counter
<b>Title</b>	String
<b>Count</b>	Number
<b>Stock</b>	Boolean

The data for the "Widgets" list is as follows:

ID	Title	Count	Stock
1	Widget A	50	No
2	Widget B	100	No
3	Widget C	23	Yes

### 4.1 Obtain List Data and Schema

The minimal query simply sets the select attribute on the **dsQuery** node.

#### Request

```
<queryRequest xmlns="http://schemas.microsoft.com/sharepoint/dsp">
  <dsQuery select="/list[@id='{C13E4B16-9982-4C30-B533-2B4068B0C623}']" />
</queryRequest>
```

#### Response

```
<queryResponse xmlns="http://schemas.microsoft.com/sharepoint/dsp">
  <dsQueryResponse status="success">
    <x:schema xmlns:d="http://schemas.microsoft.com/sharepoint/dsp"
      xmlns:x="http://www.w3.org/2001/XMLSchema">
      <x:element name="Widgets">
        <x:complexType>
          <x:sequence maxOccurs="unbounded">
            <x:element name="Widgets_Row" minOccurs="0">
              <x:complexType>
                <x:sequence>
                  <x:element name="ID" minOccurs="0" d:readOnly="true"
                    d:filterSupport="IsNull;IsNotNull;Eq;Neq;Lt;
                    Gt;Leq;Geq;" d:displayName="ID" type="x:int" />
                  <x:element name="Title"
                    d:filterSupport="IsNull;IsNotNull;Eq;Neq;
                    Lt;Gt;Leq;Geq;Contains;BeginsWith;"
                    d:displayName="Title" type="x:string" />
                  <x:element name="Count" minOccurs="0"
                    d:filterSupport="IsNull;IsNotNull;Eq;Neq;Lt;Gt;
                    Leq;Geq;" d:displayName="Count" type="x:float" />
                  <x:element name="Stock" minOccurs="0"
                    d:filterSupport="IsNull;IsNotNull;Eq;Neq;" />
                </x:sequence>
              </x:complexType>
            </x:element>
          </x:sequence>
        </x:complexType>
      </x:element>
    </x:schema>
  </dsQueryResponse>
</queryResponse>
```



```

        d:displayName="Stock" type="x:boolean" />
      </x:sequence>
    </x:complexType>
  </x:element>
</x:sequence>
</x:complexType>
</x:element>
</x:schema>
<Widgets xmlns="">
  <Widgets_Row>
    <ID>1</ID>
    <Title>Widget A</Title>
    <Count>100</Count>
    <Stock>0</Stock>
  </Widgets_Row>
  <Widgets_Row>
    <ID>2</ID>
    <Title>Widget B</Title>
    <Count>100</Count>
    <Stock>0</Stock>
  </Widgets_Row>
  <Widgets_Row>
    <ID>3</ID>
    <Title>Widget C</Title>
    <Count>23</Count>
    <Stock>1</Stock>
  </Widgets_Row>
</Widgets>
</dsQueryResponse>
</queryResponse>

```

## 4.2 Obtain the List Schema

Setting the **resultContent** attribute to "schemaOnly" results in only schema data being returned.

### Request

```

<queryRequest xmlns="http://schemas.microsoft.com/sharepoint/dsp">
  <dsQuery select="/list[@id='{C13E4B16-9982-4C30-B533-2B4068B0C623}']">
    resultContent="schemaOnly" />
  </dsQuery>
</queryRequest>

```

### Response

```

<queryResponse xmlns="http://schemas.microsoft.com/sharepoint/dsp">
  <dsQueryResponse status="success">
    <x:schema xmlns:d="http://schemas.microsoft.com/sharepoint/dsp"
      xmlns:x="http://www.w3.org/2001/XMLSchema">
      <x:element name="Widgets">
        <x:complexType>
          <x:sequence maxOccurs="unbounded">
            <x:element name="Widgets_Row" minOccurs="0">
              <x:complexType>
                <x:sequence>
                  <x:element name="ID" minOccurs="0" d:readOnly="true"
                    d:filterSupport="IsNull;IsNotNull;Eq;Neq;Lt;
                    Gt;Leq;Geq;" d:displayName="ID" type="x:int" />
                  <x:element name="Title"
                    d:filterSupport="IsNull;IsNotNull;Eq;Neq;
                    Lt;Gt;Leq;Geq;Contains;BeginsWith;"
                    d:displayName="Title" type="x:string" />
                  <x:element name="Count" minOccurs="0"
                    d:filterSupport="IsNull;IsNotNull;Eq;Neq;Lt;Gt;

```

```

        Leq;Geg;" d:displayName="Count" type="x:float" />
        <x:element name="Stock" minOccurs="0"
            d:filterSupport="IsNull;IsNotNull;Eq;Neg;"
            d:displayName="Stock" type="x:boolean" />
    </x:sequence>
</x:complexType>
</x:element>
</x:sequence>
</x:complexType>
</x:element>
</x:schema>
</dsQueryResponse>
</queryResponse>

```

### 4.3 Obtain Filtered List Data

The following is an example of a query for obtaining list data for all list items with an identifier greater than 1. To obtain the list data, but not list schema, the **resultContent** attribute is set to the value of "dataOnly". Filtering is achieved by setting the **Where** clause of the **Query**.

#### Request

```

<queryRequest xmlns="http://schemas.microsoft.com/sharepoint/dsp">
  <dsQuery select="/list[@id='{C13E4B16-9982-4C30-B533-2B4068B0C623}']"
    resultContent="dataOnly">
    <Query>
      <Where>
        <Gt>
          <FieldRef Name="ID" />
          <Value>1</Value>
        </Gt>
      </Where>
    </Query>
  </dsQuery>
</queryRequest>

```

#### Response

```

<queryResponse xmlns="http://schemas.microsoft.com/sharepoint/dsp">
  <dsQueryResponse status="success">
    <Widgets xmlns="">
      <Widgets_Row>
        <ID>2</ID>
        <Title>Widget B</Title>
        <Count>100</Count>
        <Stock>0</Stock>
      </Widgets_Row>
      <Widgets_Row>
        <ID>3</ID>
        <Title>Widget C</Title>
        <Count>23</Count>
        <Stock>1</Stock>
      </Widgets_Row>
    </Widgets>
  </dsQueryResponse>
</queryResponse>

```

## **5 Security**

### **5.1 Security Considerations for Implementers**

This protocol introduces no additional security considerations beyond those applicable to its underlying protocols.

### **5.2 Index of Security Parameters**

None.

## 6 Appendix A: Full WSDL

For ease of implementation, the full WSDL and schema are provided in this appendix.

```
<?xml version="1.0" encoding="utf-8"?>
<wsdl:definitions xmlns:soap="http://schemas.xmlsoap.org/wsdl/soap/"
xmlns:tns="http://schemas.microsoft.com/sharepoint/dsp"
xmlns:s="http://www.w3.org/2001/XMLSchema"
xmlns:soap12="http://schemas.xmlsoap.org/wsdl/soap12/"
xmlns:http="http://schemas.xmlsoap.org/wsdl/http/"
xmlns:wsdl="http://schemas.xmlsoap.org/wsdl/"
targetNamespace="http://schemas.microsoft.com/sharepoint/dsp">
  <wsdl:types>
    <s:schema elementFormDefault="qualified"
targetNamespace="http://schemas.microsoft.com/sharepoint/dsp">
      <s:import namespace="http://www.w3.org/2001/XMLSchema" />
      <s:element name="queryRequest" nillable="true">
        <s:complexType>
          <s:sequence>
            <s:element minOccurs="0" name="dsQuery" type="tns:DSQuery" />
          </s:sequence>
        </s:complexType>
      </s:element>
      <s:complexType name="DSQuery">
        <s:sequence>
          <s:element minOccurs="0" name="Query" type="tns:DspQuery" />
        </s:sequence>
        <s:attribute name="select" type="s:string" />
        <s:attribute default="both" name="resultContent"
type="tns:ResultContentType" />
        <s:attribute default="element" name="columnMapping"
type="tns:ColumnMappingType" />
        <s:attribute name="resultNamespace" type="s:string" />
        <s:attribute name="resultPrefix" type="s:string" />
        <s:attribute name="resultRoot" type="s:string" />
        <s:attribute name="resultRow" type="s:string" />
        <s:attribute name="startPosition" type="s:string" />
        <s:attribute name="comparisonLocale" type="s:string" />
      </s:complexType>
      <s:complexType name="DspQuery">
        <s:sequence>
          <s:element minOccurs="0" name="Fields" type="tns:Fields" />
          <s:element minOccurs="0" name="Where">
            <s:complexType mixed="true">
              <s:sequence>
                <s:any />
              </s:sequence>
            </s:complexType>
          </s:element>
          <s:element minOccurs="0" name="OrderBy"
type="tns:ArrayOfOrderField" />
        </s:sequence>
        <s:attribute default="-1" name="RowLimit" type="s:long" />
      </s:complexType>
      <s:complexType name="Fields">
        <s:choice>
          <s:element name="AllFields" type="tns:AllFields" />
          <s:sequence>
            <s:element name="Field" type="tns:Field" maxOccurs="unbounded" />
          </s:sequence>
        </s:choice>
      </s:complexType>
      <s:complexType name="Field">
        <s:attribute name="Name" type="s:string" />
        <s:attribute name="Alias" type="s:string" />
      </s:complexType>
      <s:complexType name="AllFields">
```

```

        <s:attribute default="false" name="IncludeHiddenFields"
            type="s:boolean" />
    </s:complexType>
    <s:complexType name="ArrayOfOrderField">
        <s:sequence>
            <s:element minOccurs="0" maxOccurs="unbounded" name="OrderField"
                type="tns:OrderField" />
        </s:sequence>
    </s:complexType>
    <s:complexType name="OrderField">
        <s:attribute name="Name" type="s:string" />
        <s:attribute default="ASC" name="Direction"
            type="tns:OrderDirection" />
    </s:complexType>
    <s:simpleType name="OrderDirection">
        <s:restriction base="s:string">
            <s:enumeration value="ASC" />
            <s:enumeration value="DESC" />
        </s:restriction>
    </s:simpleType>
    <s:simpleType name="ResultContentType">
        <s:restriction base="s:string">
            <s:enumeration value="both" />
            <s:enumeration value="schemaOnly" />
            <s:enumeration value="dataOnly" />
        </s:restriction>
    </s:simpleType>
    <s:simpleType name="ColumnMappingType">
        <s:restriction base="s:string">
            <s:enumeration value="element" />
            <s:enumeration value="attribute" />
        </s:restriction>
    </s:simpleType>
    <s:element name="queryResponse">
        <s:complexType mixed="true">
            <s:sequence>
                <s:element name="dsQueryResponse" type="tns:DSQueryResponse"/>
            </s:sequence>
        </s:complexType>
    </s:element>
    <s:element name="DSQueryResponse">
        <s:complexType>
            <s:sequence>
                <s:any/>
            </s:sequence>
            <s:attribute name="status" type="s:string"/>
            <s:attribute name="comparisionLocale" type="s:string"/>
        </s:complexType>
    </s:element>
    <s:element name="authentication">
        <s:complexType>
            <s:sequence>
                <s:any minOccurs="0" maxOccurs="unbounded" />
            </s:sequence>
            <s:anyAttribute />
        </s:complexType>
    </s:element>
    <s:element name="dataRoot">
        <s:complexType>
            <s:sequence>
                <s:element minOccurs="0" name="root" type="s:string" />
            </s:sequence>
            <s:attribute default="true" name="allowRemoteDataAccess" type="s:boolean" />
            <s:anyAttribute />
        </s:complexType>
    </s:element>
    <s:element name="request">
        <s:complexType>
            <s:attribute name="document" type="tns:DocumentType"

```

```

        use="required" />
        <s:attribute name="method" type="tns:MethodType" use="required" />
        <s:anyAttribute />
    </s:complexType>
</s:element>
<s:simpleType name="DocumentType">
    <s:restriction base="s:string">
        <s:enumeration value="content" />
        <s:enumeration value="system" />
    </s:restriction>
</s:simpleType>
<s:simpleType name="MethodType">
    <s:restriction base="s:string">
        <s:enumeration value="query" />
    </s:restriction>
</s:simpleType>
<s:element name="versions">
    <s:complexType>
        <s:sequence>
            <s:element minOccurs="0" maxOccurs="unbounded" name="version"
                type="s:string" />
        </s:sequence>
        <s:anyAttribute />
    </s:complexType>
</s:element>
</s:schema>
</wsdl:types>
<wsdl:message name="queryRequestSoapIn">
    <wsdl:part name="Request" element="tns:queryRequest" />
</wsdl:message>
<wsdl:message name="queryRequestSoapOut">
    <wsdl:part name="queryRequestResult" element="tns:queryResponse" />
</wsdl:message>
<wsdl:message name="queryRequestauthentication">
    <wsdl:part name="authentication" element="tns:authentication" />
</wsdl:message>
<wsdl:message name="queryRequestdataRoot">
    <wsdl:part name="dataRoot" element="tns:dataRoot" />
</wsdl:message>
<wsdl:message name="queryRequestrequest">
    <wsdl:part name="request" element="tns:request" />
</wsdl:message>
<wsdl:message name="queryRequestversions">
    <wsdl:part name="versions" element="tns:versions" />
</wsdl:message>
<wsdl:portType name="StsAdapterSoap">
    <wsdl:operation name="Query">
        <wsdl:input name="queryRequest" message="tns:queryRequestSoapIn" />
        <wsdl:output name="queryRequest" message="tns:queryRequestSoapOut" />
    </wsdl:operation>
</wsdl:portType>
<wsdl:binding name="StsAdapterSoap" type="tns:StsAdapterSoap">
    <soap:binding transport="http://schemas.xmlsoap.org/soap/http" />
    <wsdl:operation name="Query">
        <soap:operation
            soapAction="http://schemas.microsoft.com/sharepoint/dsp/queryRequest"
            style="document" />
        <wsdl:input name="queryRequest">
            <soap:body use="literal" />
            <soap:header message="tns:queryRequestauthentication"
                part="authentication" use="literal" />
            <soap:header message="tns:queryRequestdataRoot" part="dataRoot"
                use="literal" />
            <soap:header message="tns:queryRequestrequest" part="request"
                use="literal" />
            <soap:header message="tns:queryRequestversions" part="versions"
                use="literal" />
        </wsdl:input>
        <wsdl:output name="queryRequest">

```

```

        <soap:body use="literal" />
        <soap:header message="tns:queryRequestversions" part="versions"
            use="literal" />
    </wsdl:output>
</wsdl:operation>
</wsdl:binding>
<wsdl:binding name="StsAdapterSoap12" type="tns:StsAdapterSoap">
    <soap12:binding transport="http://schemas.xmlsoap.org/soap/http" />
    <wsdl:operation name="Query">
        <soap12:operation
            soapAction="http://schemas.microsoft.com/sharepoint/dsp/queryRequest"
            style="document" />
        <wsdl:input name="queryRequest">
            <soap12:body use="literal" />
            <soap12:header message="tns:queryRequestauthentication"
                part="authentication" use="literal" />
            <soap12:header message="tns:queryRequestdataRoot" part="dataRoot"
                use="literal" />
            <soap12:header message="tns:queryRequestrequest" part="request"
                use="literal" />
            <soap12:header message="tns:queryRequestversions" part="versions"
                use="literal" />
        </wsdl:input>
        <wsdl:output name="queryRequest">
            <soap12:body use="literal" />
            <soap12:header message="tns:queryRequestversions" part="versions"
                use="literal" />
        </wsdl:output>
    </wsdl:operation>
</wsdl:binding>
</wsdl:definitions>

```

## 7 Appendix B: Product Behavior

The information in this specification is applicable to the following Microsoft products or supplemental software. References to product versions include released service packs.

- Microsoft Office SharePoint Designer 2007
- Microsoft SharePoint Designer 2010
- Microsoft SharePoint Designer 2013
- Windows SharePoint Services 2.0
- Windows SharePoint Services 3.0
- Microsoft SharePoint Foundation 2010
- Microsoft SharePoint Foundation 2013
- Microsoft SharePoint Server 2016

Exceptions, if any, are noted below. If a service pack or Quick Fix Engineering (QFE) number appears with the product version, behavior changed in that service pack or QFE. The new behavior also applies to subsequent service packs of the product unless otherwise specified. If a product edition appears with the product version, behavior is different in that product edition.

Unless otherwise specified, any statement of optional behavior in this specification that is prescribed using the terms SHOULD or SHOULD NOT implies product behavior in accordance with the SHOULD or SHOULD NOT prescription. Unless otherwise specified, the term MAY implies that the product does not follow the prescription.

[<1> Section 3.1.4.1](#): Microsoft SharePoint Foundation 2010 Service Pack 1 and Microsoft SharePoint Foundation 2010 return a SOAP fault with the error string "Request is empty."

[<2> Section 3.1.4.1.3.1.3](#): In Windows SharePoint Services 3.0, the **columnMapping** setting has no effect on the schema returned in the response; the schema for the element setting of **columnMapping** is returned. However, the data payload does respect this setting as described in section [3.1.4.1.4.3](#).



## 8 Change Tracking

No table of changes is available. The document is either new or has had no changes since its last release.

## 9 Index

### A

Abstract data model  
[server](#) 12  
[Applicability](#) 8  
[Attribute groups](#) 11  
[Attributes](#) 11

### C

[Capability negotiation](#) 9  
[Change tracking](#) 41  
[Complex types](#) 11  
server  
    [AllFields](#) 28  
    [ArrayOfOrderField](#) 28  
    [DspQuery](#) 26  
    [DSQuery](#) 16  
    [Field](#) 27  
    [Fields](#) 27  
    [OrderField](#) 28

### D

Data model - abstract  
[server](#) 12

### E

Elements  
server  
    [authentication](#) 14  
    [dataRoot](#) 15  
    [queryRequest](#) 14  
    [queryResponse](#) 14  
    [request](#) 15  
    [versions](#) 15  
Events  
    [local - server](#) 31  
    [timer - server](#) 31  
Examples  
    [obtaining Filtered List Data](#) 34  
    [obtaining list data and schema](#) 32  
    [obtaining the list schema](#) 33  
    [overview](#) 32

### F

[Fields - vendor-extensible](#) 9  
[Full WSDL](#) 36

### G

[Glossary](#) 6  
[Groups](#) 11

### I

[Implementer - security considerations](#) 35  
[Index of security parameters](#) 35  
[Informative references](#) 7  
Initialization

[server](#) 12  
[Introduction](#) 6

### L

Local events  
[server](#) 31

### M

Message processing  
[server](#) 12  
Messages  
    [attribute groups](#) 11  
    [attributes](#) 11  
    [complex types](#) 11  
    [elements](#) 10  
    [enumerated](#) 10  
    [groups](#) 11  
    [namespaces](#) 10  
server  
    [queryRequestSoapIn](#) 13  
    [queryRequestSoapOut](#) 13  
    [simple types](#) 11  
    [syntax](#) 10  
    [transport](#) 10

### N

[Namespaces](#) 10  
[Normative references](#) 7

### O

[Obtaining filtered list data example](#) 34  
[Obtaining list data and schema example](#) 32  
[Obtaining the list schema example](#) 33  
Operations  
    [Query](#) 13  
[Overview \(synopsis\)](#) 8

### P

[Parameters - security index](#) 35  
[Preconditions](#) 8  
[Prerequisites](#) 8  
[Product behavior](#) 40  
Protocol Details  
    [overview](#) 12

### R

[References](#) 7  
    [informative](#) 7  
    [normative](#) 7  
[Relationship to other protocols](#) 8

### S

Security  
    [implementer considerations](#) 35  
    [parameter index](#) 35

- Sequencing rules
  - [server](#) 12
- Server
  - [abstract data model](#) 12
  - [initialization](#) 12
  - [local events](#) 31
  - [message processing](#) 12
  - [Query operation](#) 13
    - [complex types](#) 16
    - [elements](#) 13
    - [messages](#) 13
    - [simple types](#) 28
  - [sequencing rules](#) 12
  - [timer events](#) 31
  - [timers](#) 12
- [Simple types](#) 11
  - server
    - [ColumnMappingType](#) 30
    - [DocumentType](#) 30
    - [MethodType](#) 31
    - [OrderDirection](#) 29
    - [ResultContentType](#) 29
- [Standards assignments](#) 9
- Syntax
  - [messages - overview](#) 10

## T

- Timer events
  - [server](#) 31
- Timers
  - [server](#) 12
- [Tracking changes](#) 41
- [Transport](#) 10
- Types
  - [complex](#) 11
  - [simple](#) 11

## V

- [Vendor-extensible fields](#) 9
- [Versioning](#) 9

## W

- [WSDL](#) 36